



New Veneer Patching Line R7 patching veneer at CFP.

SUCCESS STORY |

RETURN ON INVESTMENT FOR VENEER PATCHING LINE R7 IN JUST OVER A YEAR AT COLUMBIA FOREST PRODUCTS, CANADA

Sit down with **Mike Fournier**, Mill Manager at Columbia Forest Products for a few moments, and you'll learn a whole lot. As a 40-year veteran in the industry, Mike's been with CFP for most of his working life and has experienced the industry's history, something most of us only read about. "Global competition is so tight that you need every competitive advantage," says Fournier. "We have a select customer base that demands high quality wood and exceptional customer service."

COLUMBIA FOREST PRODUCTS (CFP)

Founded in 1957, Columbia Forest Products (CFP) is North America's largest manufacturer of hardwood plywood and hardwood veneer products. Columbia's decorative interior veneers and panels are used in high-end cabinetry, fine furniture, architectural millwork and commercial fixtures. Columbia's products are sold through a network of wholesale distributors, mass merchandisers and original equipment manufacturers.



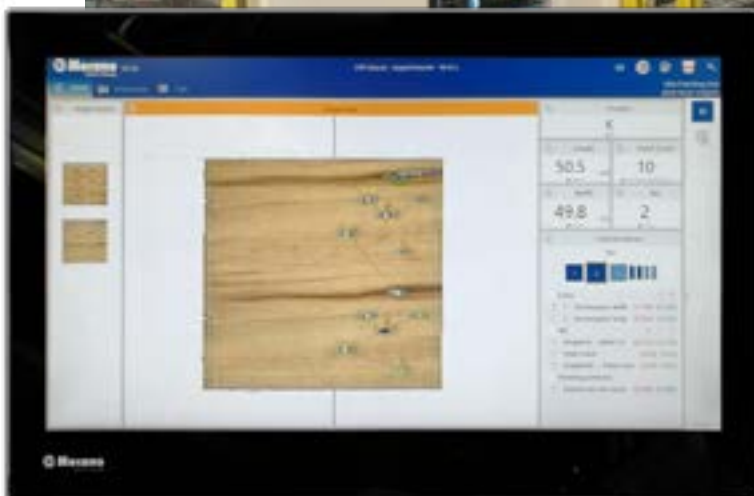
Raute installed a P1 Patchman in 2008. “The truth is if we didn’t have the P1 installed then, we wouldn’t be in business right now,” says Fournier. They weren’t planning to change the equipment, but the technology in 10 years evolved, and an upgrade was necessary. Along with the latest sensing technology in the Veneer Visual Analyzer R7 – Patching, the Veneer Patching Line R7 made accurate patching decisions faster than the human eye could even detect them. In September of 2019, CFP installed their new Veneer Patching Line R7 and while the original P1 took months to get up and running, the Veneer Patching Line R7 was in full production in a mere 4.5 weeks. Within a further 8 weeks of operation, the line was able to meet /exceed the performance guarantee. “Any downtime is lost money,” says Fournier. “The Raute team, they have good people, and really worked to reduce their original installation time by half.”

“ Veneer Patching Line R7 was in full production in a mere 4.5 weeks ”

Mike Fournier, Mill Manager at Columbia Forest Products



CFP modernized their P1 patching line to Veneer Patching Line R7.



Latest Raute visual analyzer defects patchable defects and grades veneer at the same time.



Veneer Patching Line R7 has new type of patching head and veneer gripper.

The Veneer Patching Line R7 is running at full capacity at the CFP mill. Their plan is to increase patching capacity by another 33% in the future. "Realistically, the return on investment will be realized in December 2020, just over a year after installation," continues Fournier. "There are ups and downs in this industry. There are good and bad things that happen, but at the end of the day, I will still continue to purchase from Raute if it makes fiscal sense. They do make good equipment."



Stacking and grading patched veneer sheets.